

Ascend

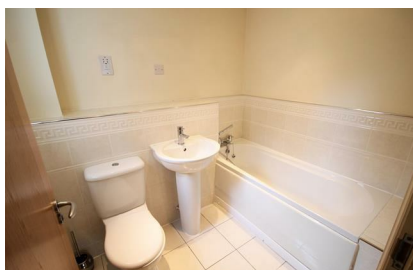
Built on higher standards



15 Brentwood Court Eccles M30 9GX

- Excellent sought-after location
- Use of communal garden and courtyard
- Perfect for commuting
- No pets allowed
- Designated parking space
- Large living accommodation
- Two bedroom apartment
- Part-furnished

£1,100 PCM



A superb 1st floor apartment in a highly sought-after area, boasting a huge amount of interior space.

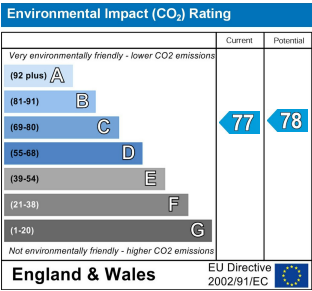
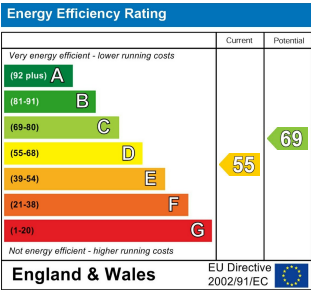
Located in the leafy, sought after area of Ellesmere Park, this development of 21 apartments has been constructed around a central courtyard and has been built to a very high specification. This apartment in particular has a fully-fitted contemporary kitchen with granite work surfaces, integrated oven, hob and extractor, dishwasher and washing machine as well as a modern bathroom suite.

You will also have a spacious living room with high ceilings and two good sized double bedrooms, with one featuring an en-suite shower room. All properties benefit from allocated parking spaces, a secure video entry phone system and use of a communal garden area to the rear of the building.

Viewing is a definite must, so if you'd like to take a closer look, please do get in touch with our team. Images are for marketing purposes only.

****Available 5th January 2026****

Deposit - £1,260
Part-Furnished
Tax Band C



Ascend

Built on higher standards

0161 707 7584

192 Monton Road, Monton, Manchester,
M30 9PY

monton.sales@ascendproperties.com,
monton.lettings@ascendproperties.com
www.ascendproperties.com



These particulars, whilst believed to be accurate are set out as a general outline only for guidance and do not constitute any part of an offer or contract. Intending purchasers should not rely on them as statements of representation of fact, but must satisfy themselves by inspection or otherwise as to their accuracy. No person in this firm's employment has the authority to make or give any representation or warranty in respect of the property